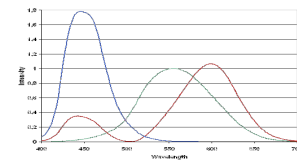


Multipoint Measurement System MELOT-TC

The MELOT-TC is a system which is adjusted on a very high and absolute color-accuracy for the parallel test of color and intensity of self-luminescent objects in the visible area of light. With this modular system, it is possible to test 1 up to 961 measuring points in parallel. Disturbances through environment light are automatically compensated. As a stand-alone version the color and intensity of the test objects can be separately parameterized and evaluated. The measurement time for e.g. 31 objects depends on intensity and lies between 0,3 and 1,2 seconds for 31 objects. In use of WIN32 DLL by serial interface there is an additional output of measuring data in x, y, Y as well as the dominant wavelength and color-temperature.



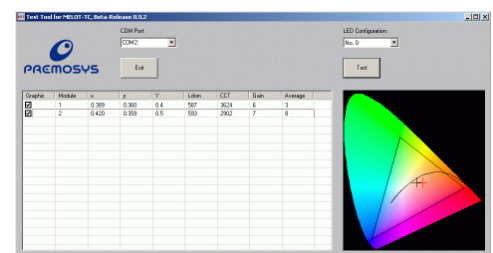
- optimized adjustment for up to 8 different types of light sources (monochromatic LED's, CCFL, white LED's, RGB-LED's)
- adjustment/calibration can also be carried out by the customer



Technical data:

- Parallel test of self-luminescent objects for their color and intensity
- Output of measuring data in x, y, Y
- Wavelength 400-700 nm
- optimized range from 410 to 650nm
- 0,005 Dx, Dy 0,005 (on average)
- spectral Resolution up to 1nm
- 20 Bit Resolution on each amplification level
- Dynamic >140 db
- 12 amplification levels
- variable interfaces I/O and serial
- Temperature compensation in the range from 20-55° Celsius

The scope of delivery includes a software tool for the commissioning, parameterization as well as the statistical evaluation of test results. It allows for the parameterization of „n“ different products. In the software tool, the input states of the ongoing product's signals are continuously displayed. An automatic "basic settings" function facilitates the determination of the parameters. The result is further optimized through the statistical evaluation of larger measurement series. By means of the tool, test and compensation cycles can be actuated and data can be imported or exported. Additionally, a detailed description of the serial interface as well as a DLL are available, clarifying all commands that enable the user to record the mere sensor values and process them with his own software. This is often necessary if the user requires greater product traceability.



The software is compatible with WIN98/WIN-NT/WIN-XP.

Dimensions CPU module

- Length: app. 72mm
- Breadth: app. 48mm
- Height: app. 56mm

Dimensions without connectors

Weight: app. 200g

Dimensions Peripheral module

- Length: app. 79mm
- Breadth: app. 17mm
- Height: app. 56mm

Dimensions without connectors and light guides

Weight: app. 150g