

Color Sensor PR0047

The module detects the color and intensity of test objects and the measurement procedure is based on measurements in comparison with reference products by means of user-specific parameters. Here the differential measurement is used, whereby disturbances through environment light are automatically compensated. The color and intensity of the test objects can be parameterized and evaluated separately. The module is conceived for high-speed processing. The internal cycle time amounts to 500us. The module possesses of a parallel (Controller) and a serial interface, which can also be used in parallel when operating.

Products from white to black can be tested without changing the gain or any other parameters.



Various types of light guides and lightings can be adapted depending on the application. Customer-specific products or requirements can also be realized.



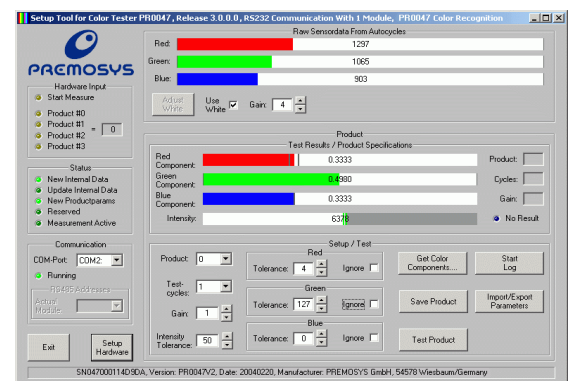
Technical data:

- Test of products for their color and intensity
- Variable interfaces I/O and serial
- internal Resolution of 13 bit, Dynamic >90 db
- Measuring resolution $\Delta E > 0,5$
- Wavelength 400 - 700nm
- 14 amplification levels
- Parallel registration of all color conducts
- Control output for external light source
- White adjustment with reference to standard panels
- Measuring distance in dependence on the used light guide 5-150mm

The scope of delivery comprises a comfortable intuitive software tool for the commissioning, parameterization and the statistical evaluation of measurement results. It allows for the parameterization of up to 15 different products. An automatic "basic settings" function facilitates the determination of the parameters. The result is further optimized through the statistical evaluation of larger measurement series. By means of the software tool, test- and compensation cycles can be actuated and data can be imported or exported.

The software disposes of a Log-function wherewith all test results can be stored in a text file. Herewith e.g. a statistical evaluation can be carried out.

Additionally, a detailed description of the serial inter face is available, clarifying all commands utilized to record the pure sensor values and evaluate them with the own software.



Dimensions

- Length: app. 90mm
- Breadth: app. 70mm
- Height: app. 22mm

Power supply

- 24VDC +/- 10%
- 0,2 A

Weight: app. 200g