

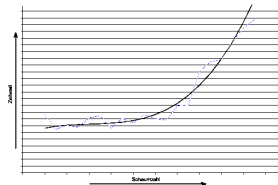


Foam analyzer PR0057

The foam analyzer serves for the evaluation of the quality of beer directly after bottling. Therefore, the system measures the disaggregation rate of the beer froth. Modifications of the transmission performance of the beer froth in the bottle are measured by means of an optic measurement procedure and then evaluated with the appropriate software. Color and thickness of the bottle are automatically compensated. After a period of 5 to 10 minutes the system provides an optical indication with "traffic light" function. After the analysis the product can be returned to the production process.



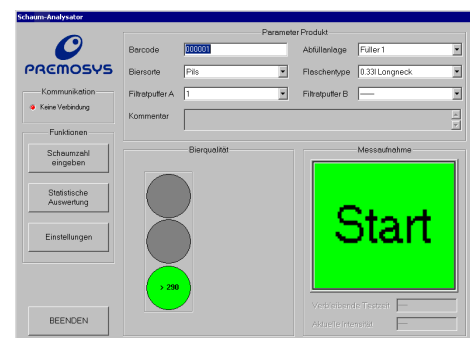
At any time, the product-specific parameters allow for a plausibility check of the analyzing process, from which the threshold qualities for a good/bad estimation ("traffic light") are then deduced. The threshold qualities can be configured according to the user's requirement. As soon as the information for the accurate detection of the foam quality is available, measurement is stopped automatically.



Technical data:

- Continuous evaluation of the foam quality as an average value, via a definable number of bottles as well as the rough and in-detail indication of their current status ("traffic light" function)
- Automatic calculation of the foam quality using a permanently stored model which is bottle as well as brand-specific.
- continuous display of the product-specific parameters
- Interface to foam analyzer RS 232
- LIMS connection over documented Access database
- Patent DE 10 2004 054 273.2 (not issued yet – Status Aug. 2008)

The system comprises a user-friendly software in multilingual accomplishment, whereby the actual analysis is widely an automated process. Therefore, the user selects the current product as well as the parameters required for the traceability (e.g. bottling line). The user then actuates the analysis using the start button and obtains an optic display of the beer quality in the form of a "traffic light" display (green, orange, red) already after 5 to 10 minutes (depending on the foam quality). The foam quality that has been established for the ongoing product is indicated in the respective "traffic light" display. In addition, the foam quality of the last measurements (configurable number) of the same product is displayed.



The software is compatible with WIN98/WIN-NT/WIN-XP.

Dimensions

- Length: app. 310mm
- Breadth: app. 270mm
- Height: app. 350mm

Power supply

- 90 - 264VAC / 50-60 Hz
- 1 A

Weight: app. 8 Kg