



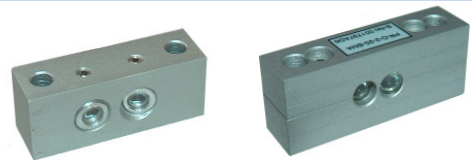
# High Speed Contrast Sensor PR0075-K

The PR0075-K is a high-speed system for contrast detection with integrated light source. The sensor analyzes received light by means of preset parameters.

The sensor is designed for a very high processing speed, the sample rate is at 300 KHz and thus suitable for the detection of very fast motion sequences. Furthermore the jitter is +/- 1,6µs constant at a slow rate as well as at a high rate.



Optics and lenses are variably adaptable for different applications, also for extreme environmental conditions.



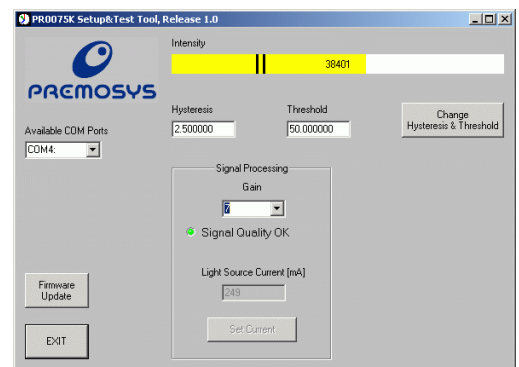
## Technical data:

- Sample rate 300 KHz
- Jitter +/- 1,6µs
- Variable setting of hysteresis
- Variable specification of upper and lower threshold
- 12 amplification levels
- Resolution 16 Bit
- Internal light source, monochromatic, red
- Ethernet interface TCP-IP
- WIN 32 DLL
- Measuring distance depending on the used light guides and optics between 4-30mm
- Software Tool for parameterization

The scope of delivery includes an intuitive PC-Tool for commissioning and testing. The software is compatible with WIN98/WIN-NT/WIN-XP and all operating parameters can be set up and also stored remanent very easy and safe. The Tool is not necessary for operating the system.

Variable in-/outputs are available over the digital interface:

- Input, Start Teach in
- Output, Teach in Ready
- High-Speed differential input 1 (plus)
- High-Speed differential input 1 (minus)



## Dimensions PR0075-K

- Length: app. 115mm
- Breadth: app. 97mm
- Height: app. 26mm

Dimensions without connectors

## Power supply

- 24V DC +/-10%; 0,5A

Weight: app. 500g