



High Speed Color Sensor PR0075-SC

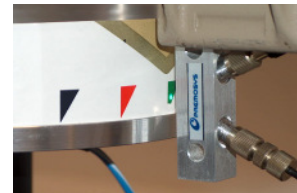
The High Speed Color Sensor PR0075-SC serves for the detection of several different colored marks at the same time with a speed of up to 55000 measurements per second. The test parameters are color and intensity. The system has an internal high power LED light source.

The measuring procedure is based on measurements in comparison to reference products by means of user-specific parameters. Color and intensity of the test object can be parameterized and evaluated separately.

Different modes of operation are available ranging from detection of 4 different colors up to additional evaluation of coded color marks. An Ethernet interface enables the integration of the system into a factory network.



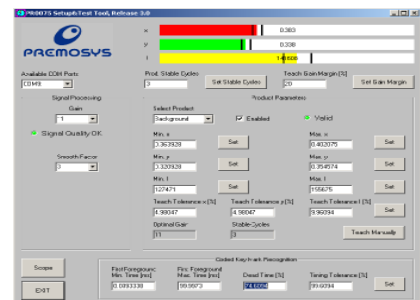
The picture shows an application in the field of the printing industry. A continuous test and adjustment of the printing unit in a printing machine is carried out by means of the position detection of the sensor.



Technical data:

- Wavelength 400 - 700nm
- Sampling rate 55 KHz
- Suppression of environmental light
- Jitter +/- 9us – depends on the operational mode
- Output x, y, I (Chromaticity)
- 13 amplification levels
- Resolution 16 Bit each channel
- parallel detection of all color channels
- Encoder input (optional)
- Ethernet interface TCP-IP
- WIN 32 DLL
- Measuring distance depends on used light guides and optics between 6-30mm
- Software Tool for parameterization

A comfortable intuitive software tool for commissioning is included in the scope of delivery. Therewith all operational parameters can be adjusted to the respective application and stored remanent on the sensor.



Dimensions PR0075-SC

- Length: app. 115mm
- Breadth: app. 97mm
- Height: app. 26mm

Power supply

- 24V DC +/-10%
- 0,5A

Weight: app. 450g