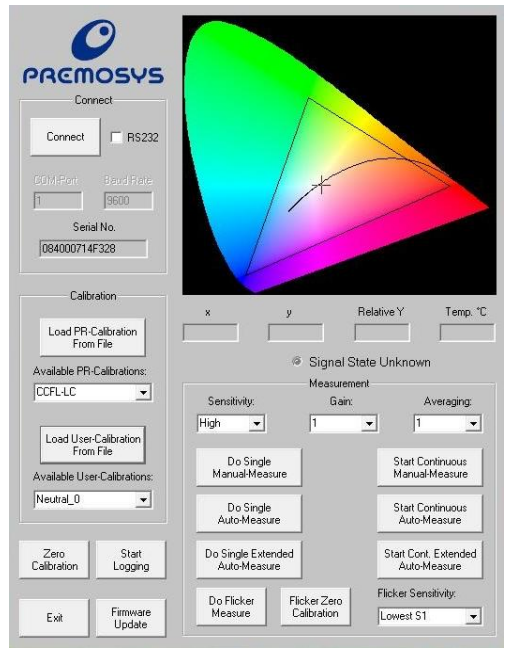


# Mii 2 Mobile Color Analyzer PR0084-....-CS

The Mii 2 Mobile Color Analyzer is a color measurement system for self-illuminating objects. The system delivers its outcomes in the Chromaticity color space x,y,Y.

A factory-installed basic adjustment (calibration) takes place which already covers different applications. To achieve the maximum accuracy it is possible to determine device-specific calibrations for e.g. CCFL, BLU, Wide-Gamut, White LED and RGB LED at the factory-owned light laboratory. Up to 8 of these completely different sets of calibrations can be stored on the system permanently. In addition 16 customer-specific calibrations can be stored and administrated on the system. Integration into customer-specific software environment is possible via WIN32 Low Level DLL.



### Versions:



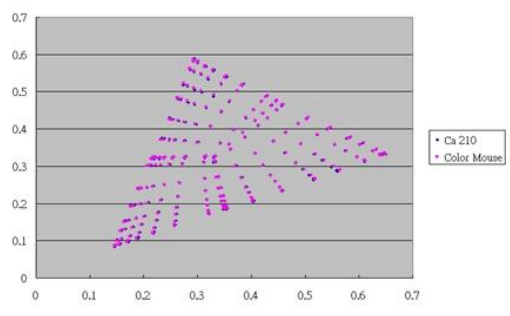
#### PR0084-USB-CS

Interface USB 2.0

#### PR0084-232-CS

Interface RS 232

### Accuracy:



### Dimensions:

- Length: app. 111mm +/- 1mm
- Width: app. 72mm +/- 1mm
- Height: app. 41mm +/- 1mm

### Power supply

- USB 2.0
- RS232

### Weight:

- approx. 120g

### Technical data:

Optics	+/- 2 Grad aperture angle	Interface	USB 2.0 and RS232
Measure range	Luminance: 0,05 bis 500 cd/qm Chromaticity: 0,05 bis 500 cd/qm	Power supply	4,7 bis 5,5V DC over USB/RS232 plug
Accuracy*	Luminance: +/-2% 1 digit ( 1 ~500cd/m2 ) Chromaticity: +/-0.002 Illuminant D65 Chromaticity: +/-0.0025 CCT 4000-15000K Chromaticity: +/-0.0065 for other colors	Set of parameter	8 für factory settings 16 for customer settings max. 10 measurements for low sensitivity Max 4 measurements for high sensitivity ca. 1800mm
Calibration	PTB Traceable	measurement speed	20 to 40 degree celsius
Flickering measuring	According VESA Norm	Lenght cable	
		Temperature compensation	

\* The accuracies relate to the calibration on one specific monitor. The measurement of „unknown“ monitors may deviate from this. A custom-designed calibration is possible and gets supported by appropriate tools.